

Raybestos Bulletin 18-07

## **Ford Focus Rear Brake Drum Replacement Part #9759**

**Vehicles Involved:** 2000 – 2008 Ford Focus Rear Drum Brakes

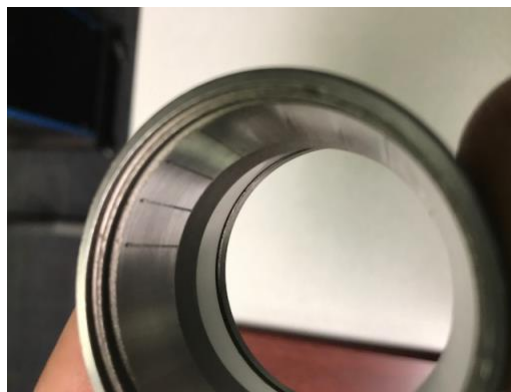
### **Condition:**

The rear-brake drum for the 2000 – 2008 Ford Focus has a double-roller style bearing integrated into the drum assembly (see Figure 1).



**Figure 1**

This drum has a unique installation process that must be followed. Failure to follow the instructions will drive the rollers of the bearing into the race. Over time, this causes a brinelling condition (see Figure 2), which leads to a noisy bearing.



**Figure 2**

### **Repair Procedure:**

1. When installing the drum, you must replace the spindle nut (see Figure 2).



**Figure 2**

2. Tighten the nut down, but do not reach your final torque.
3. Spin the drum 10 times in a counter-clockwise direction while torquing the hub nut to specifications. The nut should be tightened to 174 ft-lb of torque.